



ClimateCraft[®]

A **NIBE** GROUP MEMBER

MAKING "IMPOSSIBLE" UPGRADES POSSIBLE

Minimize Downtime In Your Air Handler
Retrofit Project With Access [™]



YOUR PRESENTER TODAY

DON WEBBER

dwebber@climatecraft.com

ACCESS™ - WHAT IS IT?

Unparalleled process for custom engineered and manufacturing air handling units

Factory-made and field-assembled to meet the unique requirements of the **space** and **building ingress**.

Quick ship solution to replace a failed or failing unit.



8 STEP PROCESS

1. Analysis*
2. Planning*
3. Design*
4. Estimating*
5. Logistics*
6. Shipping*
7. Assembly*
8. Testing

**No Shortcuts*

WHEN TO USE ACCESS™



- **FAST TRACK SCHEDULE**
Lead times are low to meet renovation timelines or new build.
- **REPLACEMENT WITHOUT EVACUATION**
Hospitals, lab, plants, casinos, colleges
- **IMPOSSIBLE LOGISTICS**
Closing-down streets in urban or congested areas for crane lifts
- **HIGH COST OF RIGGING OR DEMOLITION**
Exceeds cost of field assembly or disruption to occupants or revenue
- **BUILDING DESIGNATION LIMITS**
Prevents the use of assembled AHU
- **HIGH ENERGY & MAINTENANCE COSTS**
Existing aged air handler becomes too costly to operate
- **MECHANICAL ROOM LIMITATIONS**
When Basement, Elevator, Door/Hall limits accessibility.
- **MAJOR COMPONENT FAILURE**
Unable to access the space



SN: 27817
HW2-Coil PALLET

1037LB

**BOLTED PANEL -
PRE-PUNCHED
HOLES**

**INDUSTRIAL
QUALITY GASKETS
NOT CAULK**

DESIGNED FOR FIELD ASSEMBLY

**FRAMELESS
DESIGN PANELS**

**BOLTED ON
EXTERIOR**

WHAT MAKES CLIMATECRAFT ACCESS DIFFERENT?

ASHRAE/ANSI Standard 111

- Minimum Class 5 Performance
- Improves Energy Efficiency
- Reduces Cabinet Sweating

Gasketed / Bolted Design

- Consistent Long-Term Performance

Material & Insulation Options

- Galvanized Steel, Stainless Steel, and Aluminum
- 2", 3", or 4" Fiberglass or Injected Foam Insulation

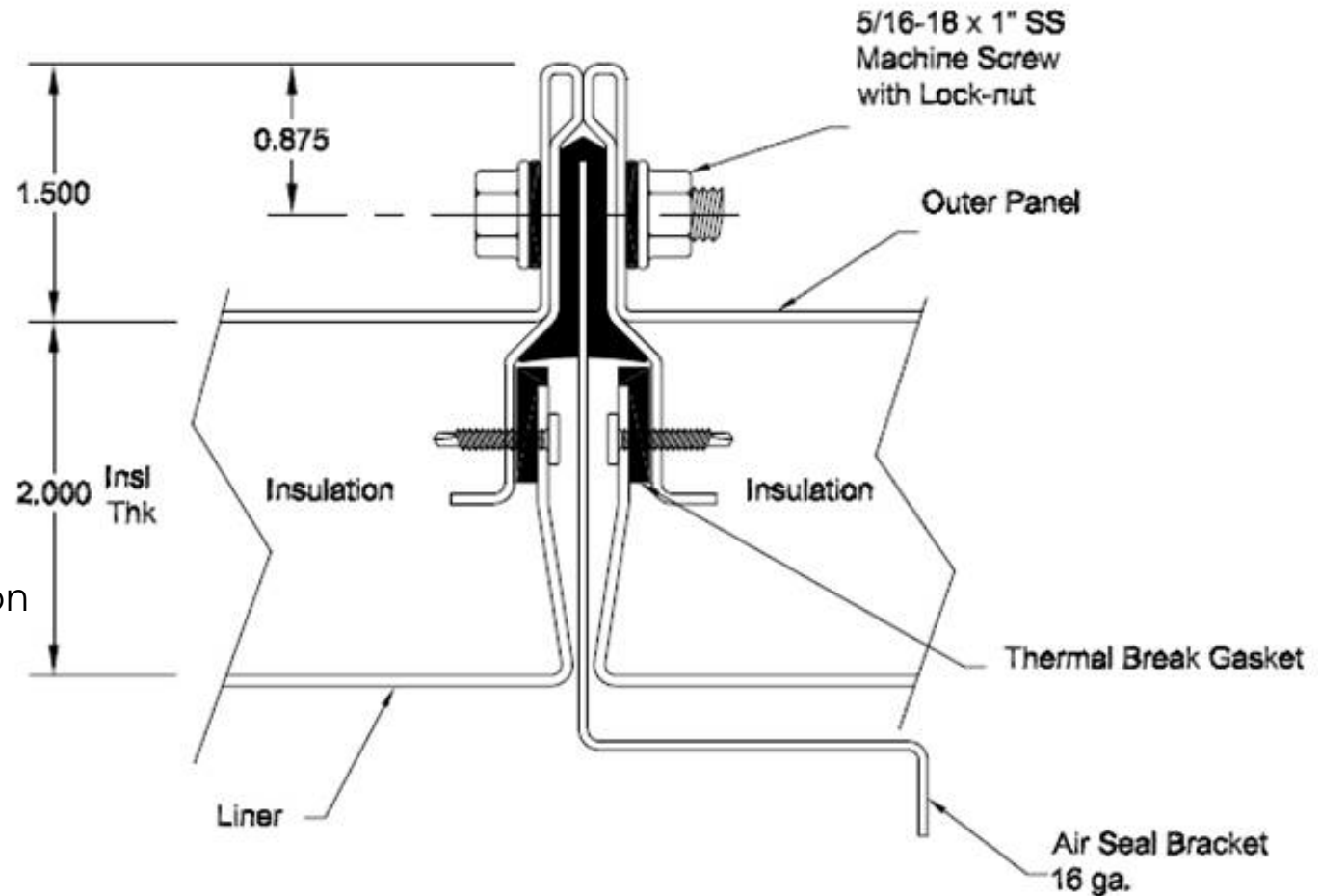
Integrated Air Seals

- Best In Class Performance

No Field Foaming Required

No Field Disassembly Labor Required (Not a Knock Down)

Assembly in the Field Is Identical to Assembly at the Factory → New Rather Than Torn Down and Rebuilt



Units engineered to meet the building performance needs and installation requirements.



Factory Engineered & Manufactured for field assembly

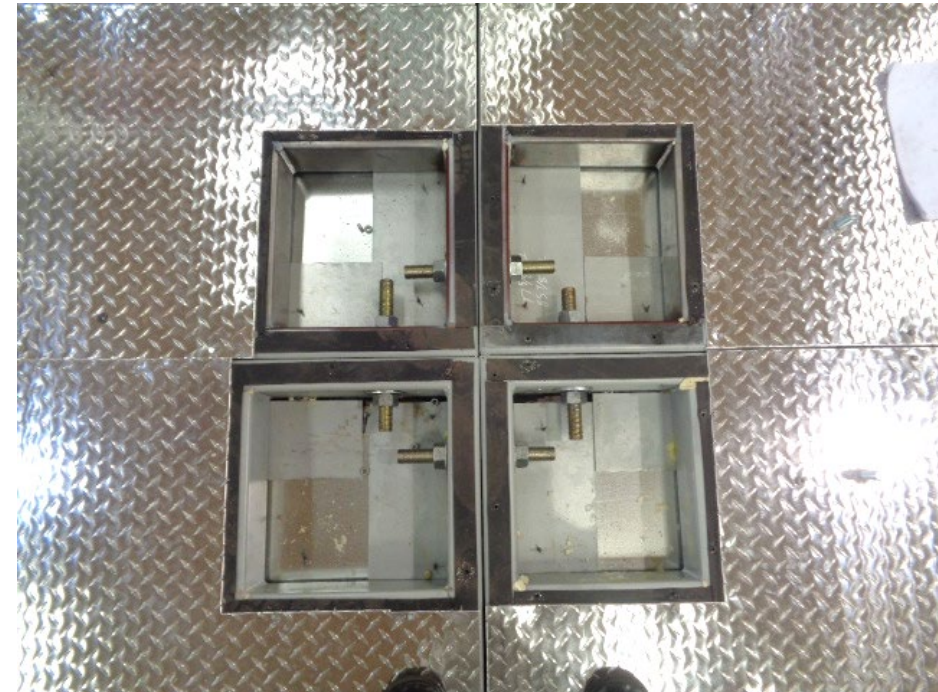


CONSIDERATIONS WHEN SELECTING ACCESS™

CONSIDERATIONS WHEN SELECTING ACCESS™



BASE OPTIONS – SECTIONALIZED WELDED FRAME



BASE OPTIONS – PANELIZED INJECTED FOAM (INDOOR)



HOW WE MAKE IT ALL POSSIBLE

Ease of Installation

- ✓ Detailed documentation
- ✓ Packaging enables logical assembly
- ✓ Warranty and certifications





OUR PACKAGING MAKES ASSEMBLY STRAIGHT-FORWARD

- Grouped by like-parts, panels, doors,
- Each piece is labeled and listed
- Brought in on skids or by piece part



ACCESS™ ASSEMBLY
is simple and straightforward
with the training and tools
ClimateCraft provides!

ClimateCraft

GRAPHIC DETAILED REFERENCE MANUAL

FOR THE INSTALLING CONTRACTOR



Wall Panel Installation Instructions



FIELD WORK INSTRUCTION

WALL PANEL INSTALLATION INSTRUCTIONS

Apply double sided tape and roof rail gasket to corner post. Make sure holes in gasket line up with holes in corner post. Gasket Part Number: PGSK-005-001



Leave approximately 6 inches of gasket hanging on the top of the corner post.



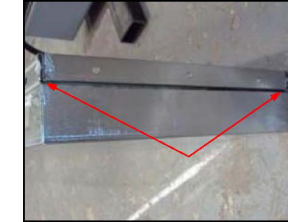
Place corner post according to drawings. Use 5/16" x 1" bolt and washer combo to secure post to base frame.

NOTE: Always start in a corner and finish at a corner when installing wall panels. Never meet in the middle.

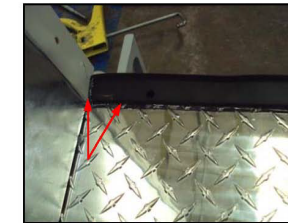


Page 2

Caulk in corners of panel on the bottom of the panel only!



Caulk in corner and along gasket the length of the panel that will be bolted to corner post.



Place panel with the caulk side down on the gasket and clamp it to adjacent panel or corner post.



Use line-up bar to align holes in panels.

Page 3



A NIBE GROUP MEMBER

PANEL MAP EXAMPLE


ClimataCraft
 1451 NW 3rd St
 Oklahoma City, OK 73108
 PHONE (405) 415-9230 - FAX (405) 415-9231
 www.climatacraft.com

JOB
 Florida State Capital
 TAG
 OAU-40K

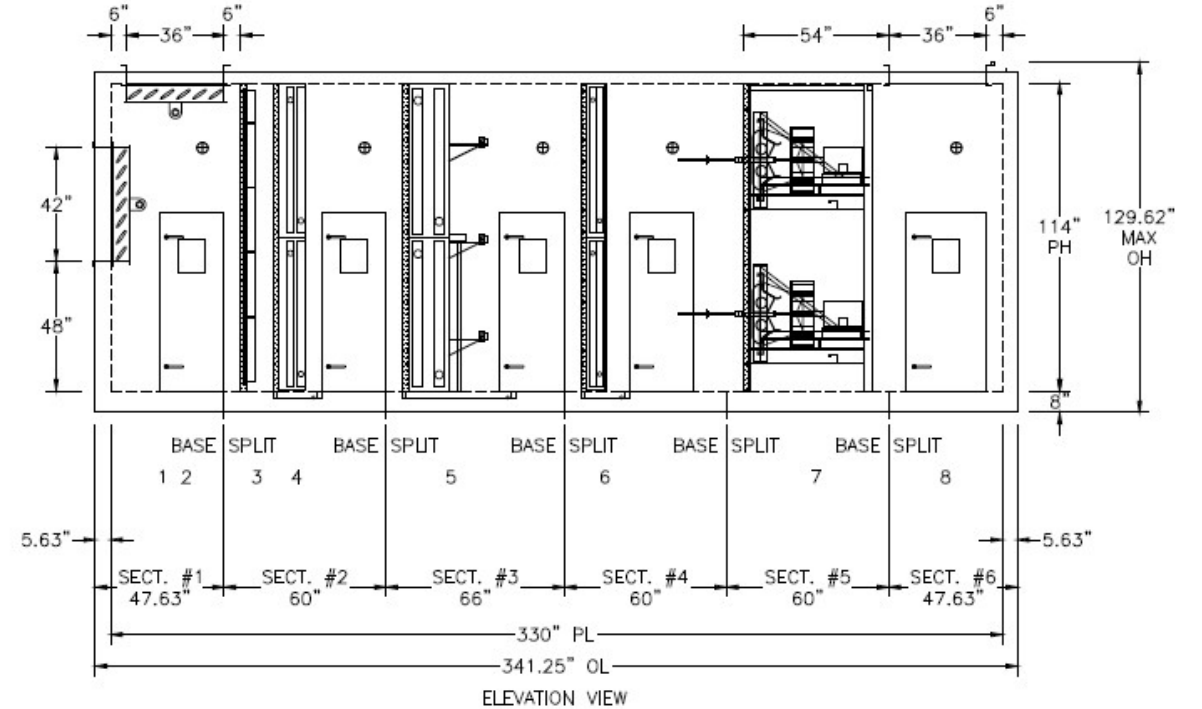
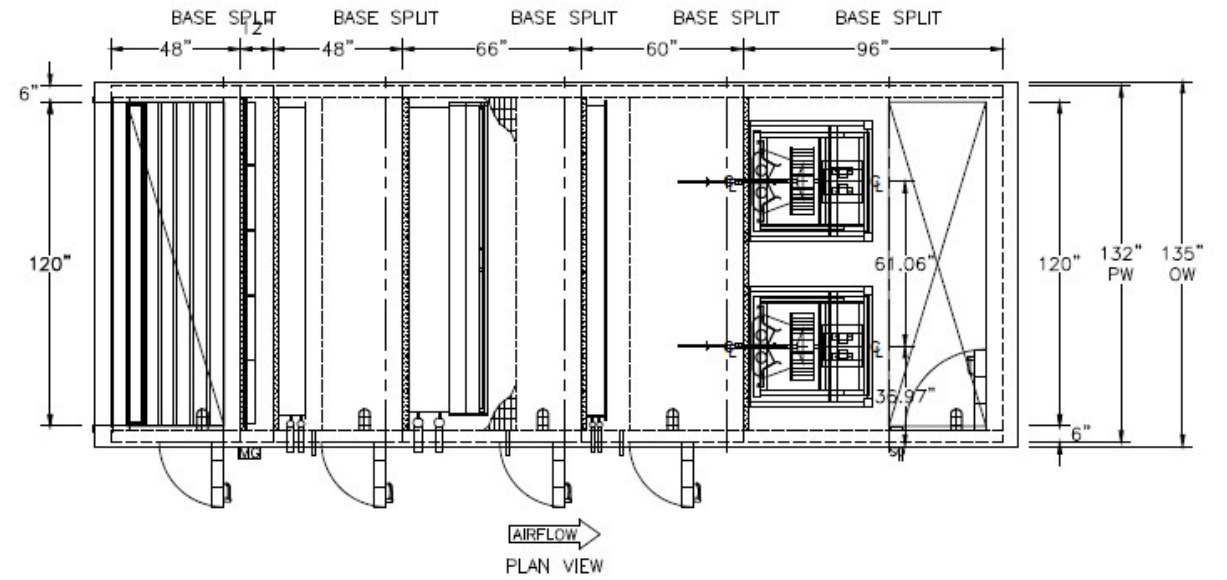
SHEET #
 SHT

SN
 Prelim
 DATE
 05/08/2020

BY
 SS
 MODEL NO.
 CAH114X132

REV
 PRELM

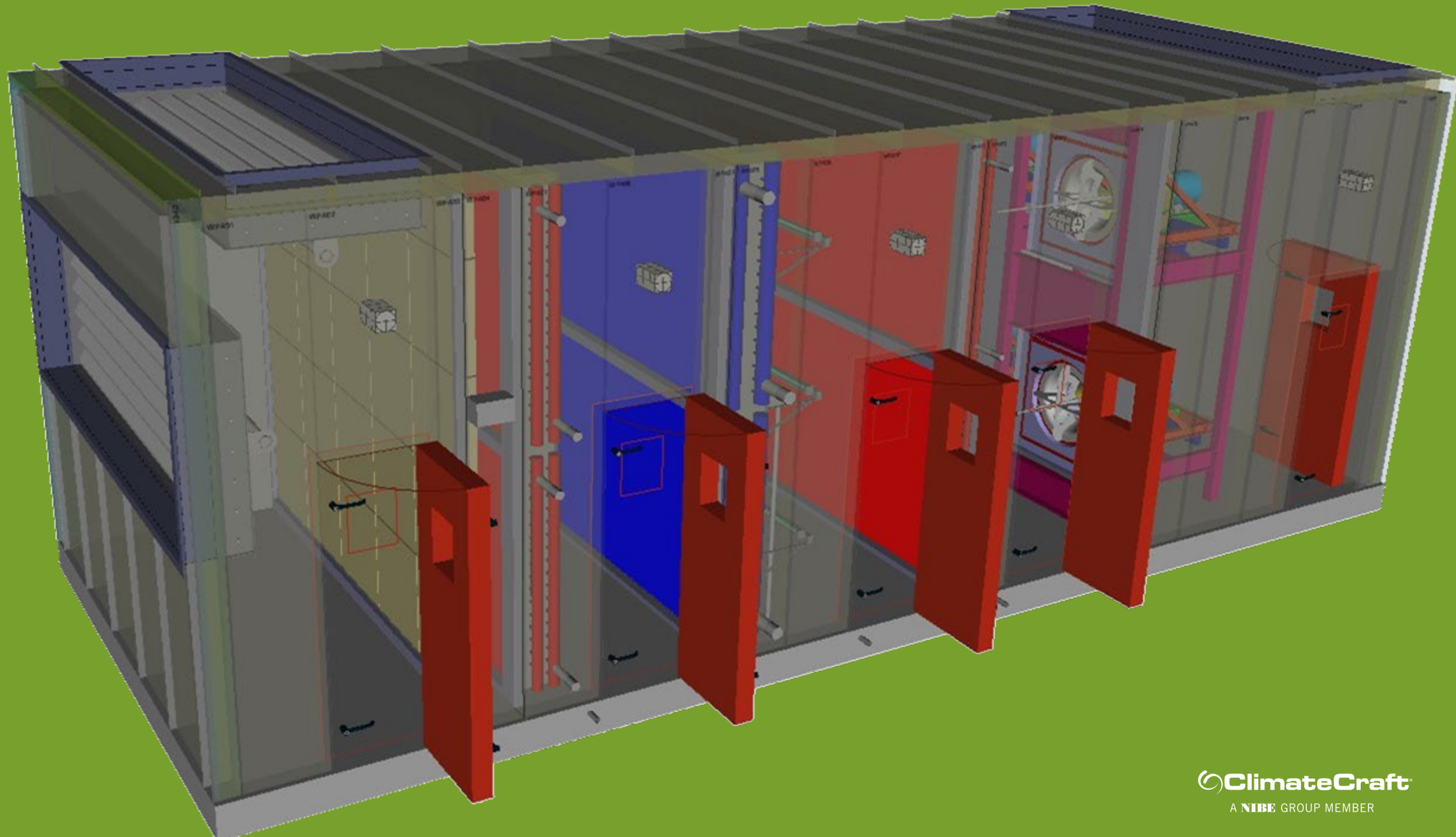
1. RA DAMPER
2. OA DAMPER
3. FILTER, 4" MERV 11 MINI-PLEATS
4. HOT WATER HEATING COIL(S)
5. CHILLED WATER COOLING COIL(S)
6. HOT WATER HEATING COIL(S)
7. SUPPLY FANMATRIX™
8. SA OPENING



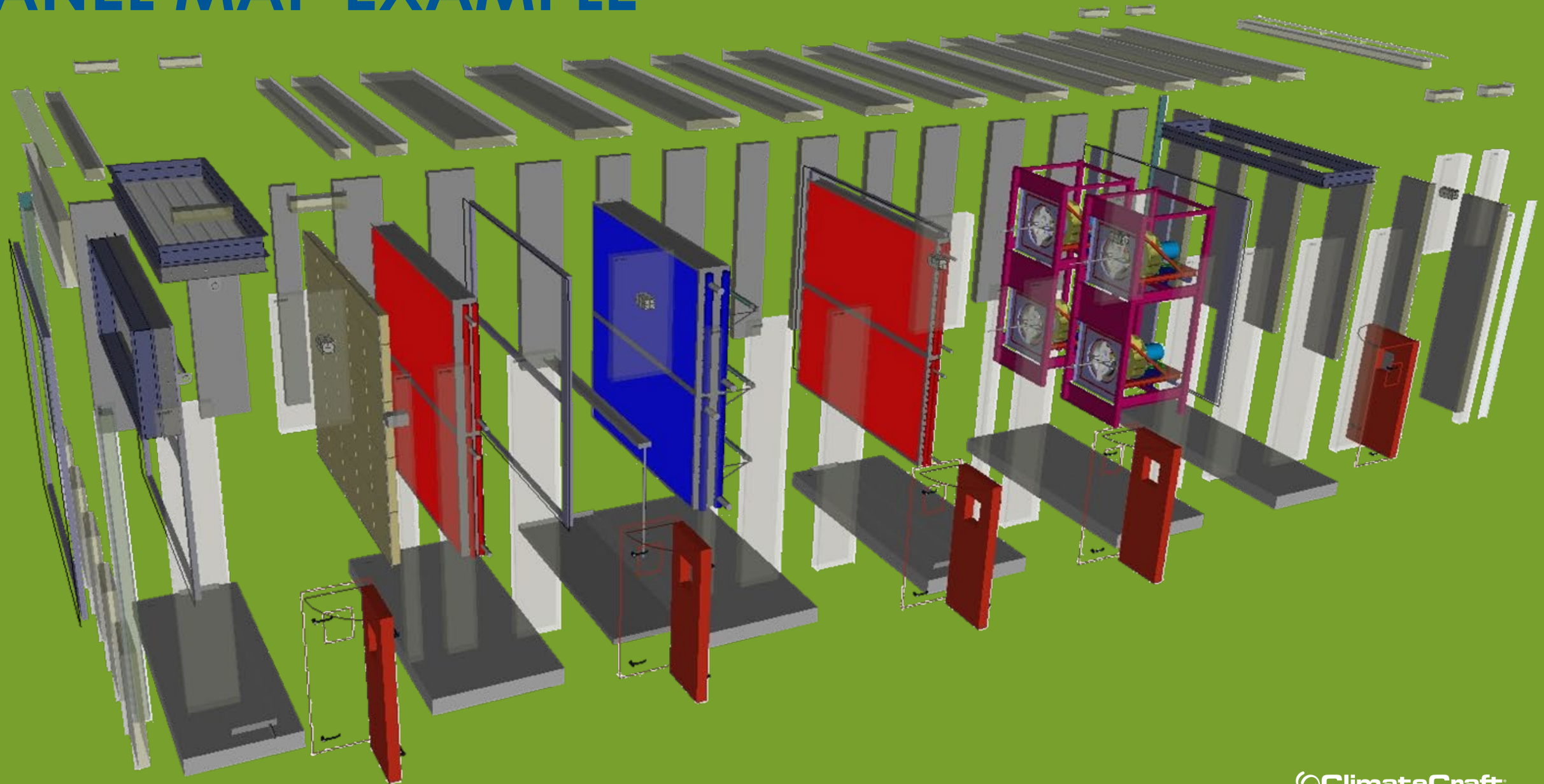
NOTE:
KNOCK DOWN UNIT

APPROXIMATE UNIT ASSEMBLED WEIGHT 24,000 LB

PANEL MAP EXAMPLE



PANEL MAP EXAMPLE



PANEL MAP EXAMPLE


ClimateCraft
 1451 NW 3rd St
 Oklahoma City, OK 73106
 PHONE (405) 415-9230 - FAX (405) 415-9231
 www.climatecraft.com

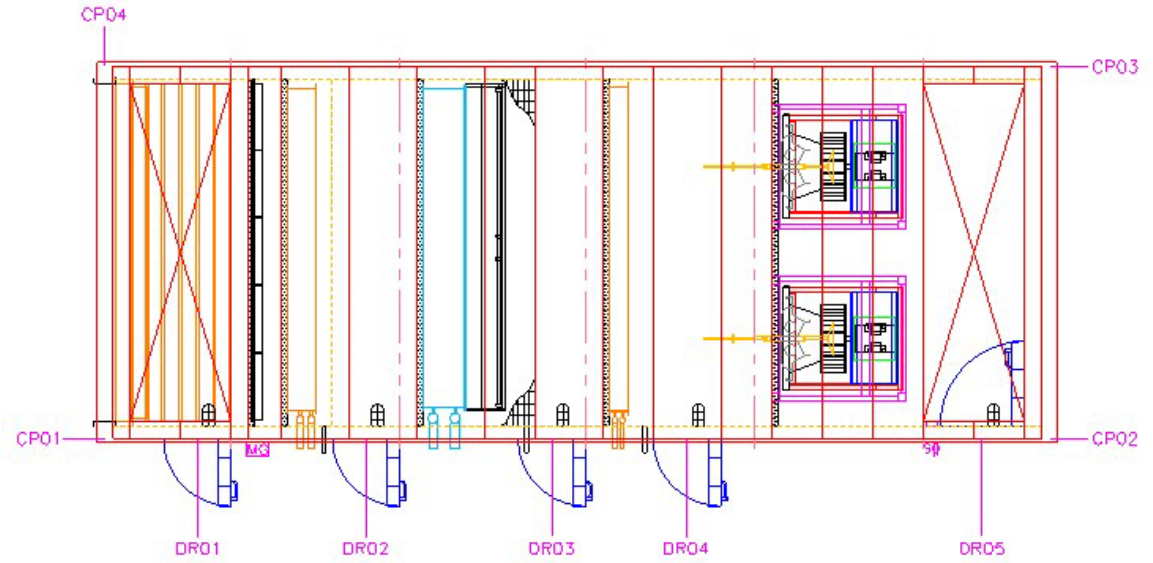
JOB
 Florida State Capitol
 TAG
 OAU-40K

SHEET #
 SH

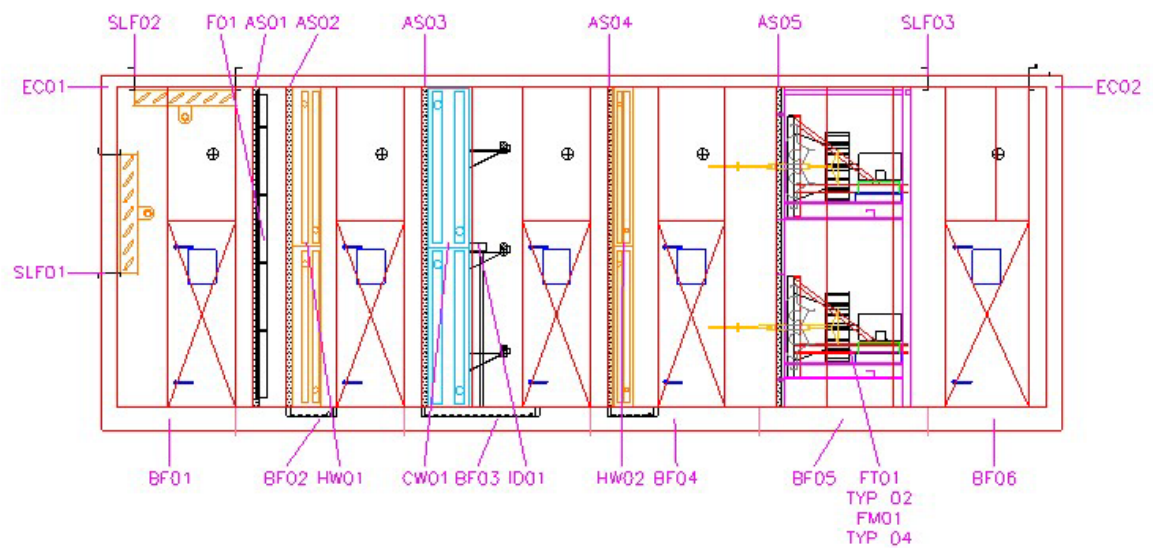
SN
 Prelim
 DATE
 05/08/2020

BY
 SS
 MODEL NO.
 CAH114X132

REV
 PRELM

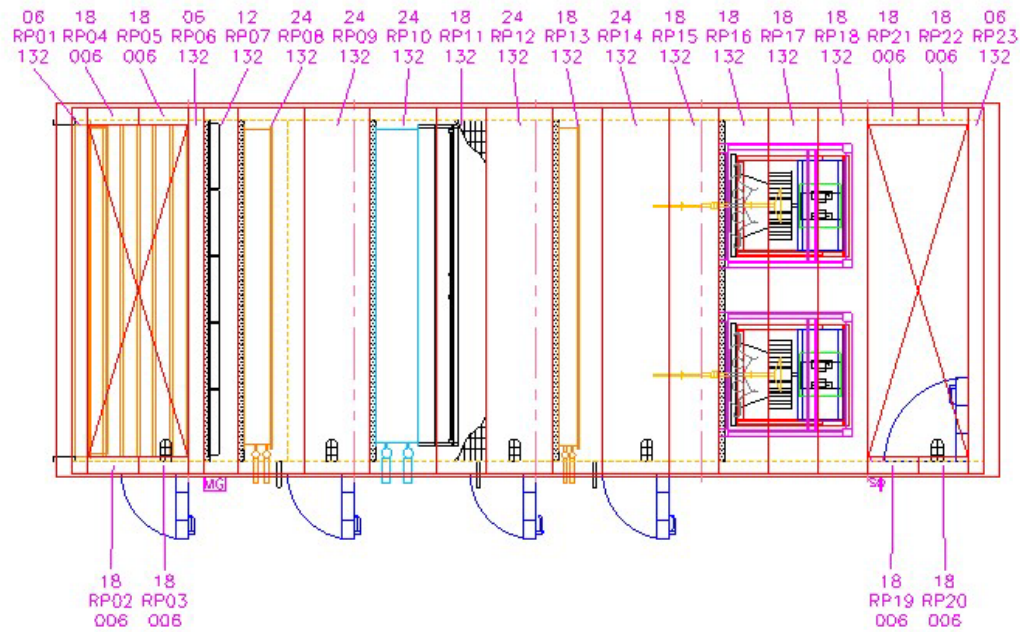


PLAN VIEW

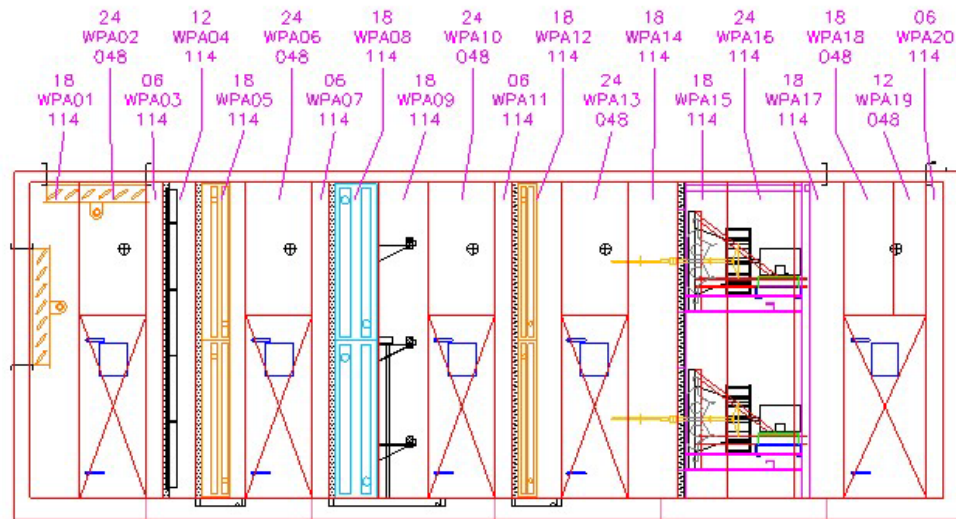


ELEVATION VIEW

PANEL MAP EXAMPLE



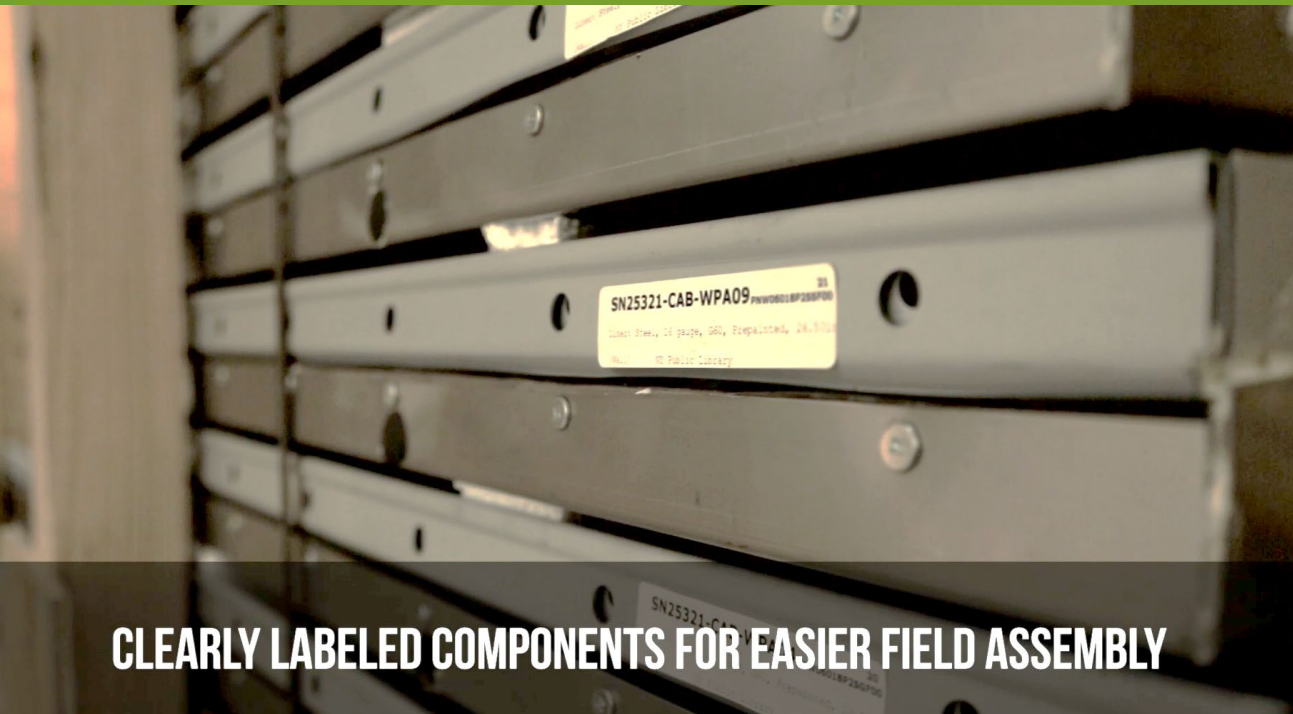
ROOF



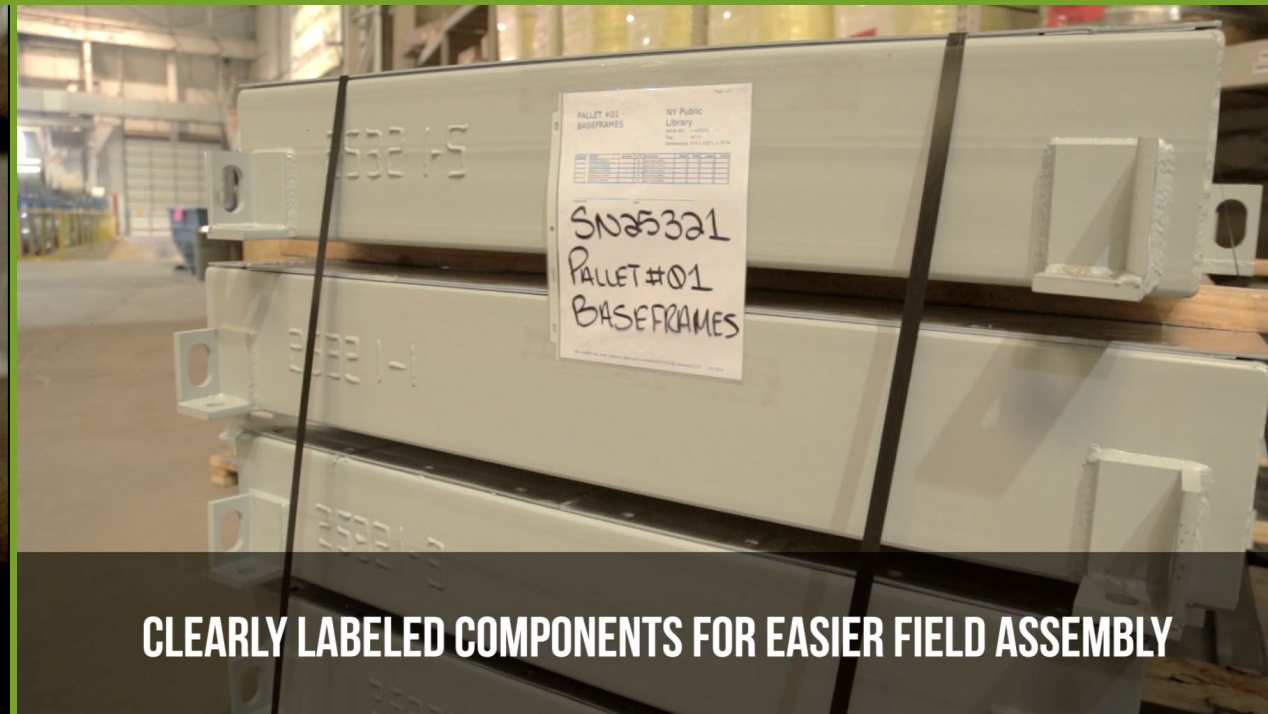
SIDE A

LABELED COMPONENTS

Individually Packaged Components for Ease of Assembly



CLEARLY LABELED COMPONENTS FOR EASIER FIELD ASSEMBLY



CLEARLY LABELED COMPONENTS FOR EASIER FIELD ASSEMBLY

LOGICAL CRATING METHODS

Customized Shipping Solutions



**Dedicated Vans or Soft Top Trucks
Direct to Off Loading Destination**



BASE FRAME



WALL PANELS

INCLUDED BENEFITS

Access™ Does Not Limit Flexibility

- Filtration Options Including HEPA
- Coils With Copper Fins & SS Casings
- UVGI Lights
- Energy Recovery Packages
- BalanceStream™
- Certified IBC & OSHPD Seismic Compliance

Documentation

- Detailed Submittal, Parts Lists & Assembly Instructions

Maintains Full Warranty Coverage

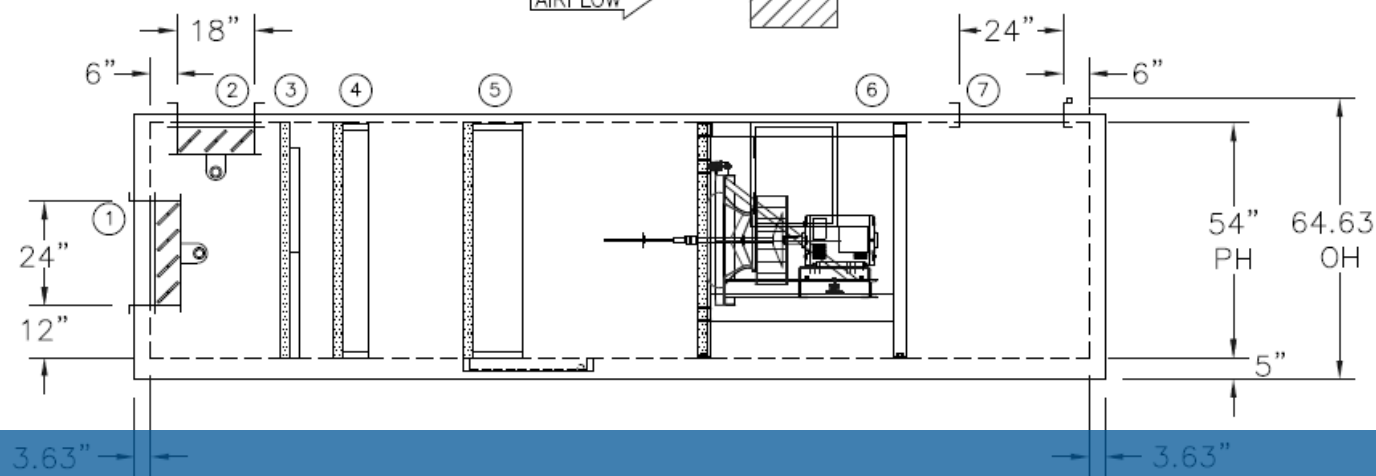
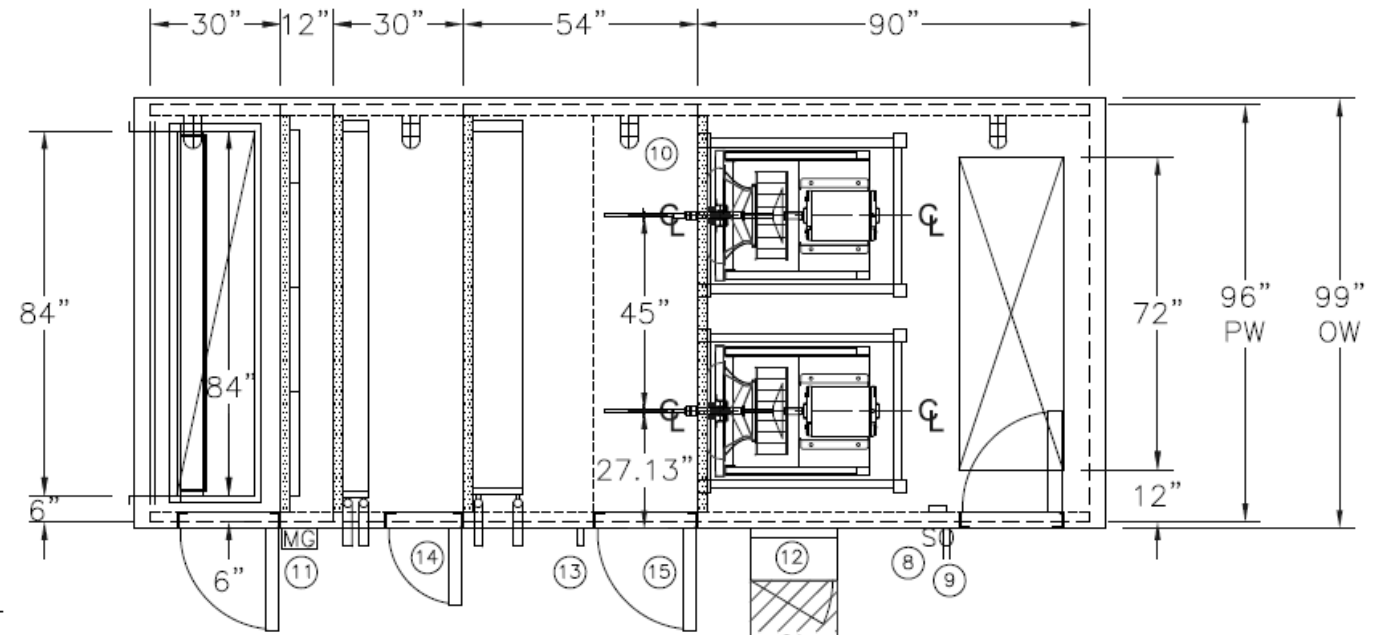
No Field Pressure Test Anxiety



SIMPLE AHU REPLACEMENT UNIT – 14,000 CFM

1. O.A. DAMPER
2. R.A. DAMPER
3. FILTERS, 2" – 30%
4. H.W. COIL
5. C.W. COIL
6. MATRIX SUPPLY FANS
W/BALANCESTREAM
7. S.A. OPENING
8. LIGHT SWITCH
9. GFI OUTLET
10. SERVICE LIGHT
(TYP OF 4)
11. MAGNEHELIC GAUGE
12. SUPPLY FAN
POWER DISTRIBUTION PANEL
24"H X 20"W X 10"D
13. 1 1/4" MPT DRAIN
14. ACCESS DOOR 54" X 18"
15. ACCESS DOOR 54" X 24"
(TYP OF 3)

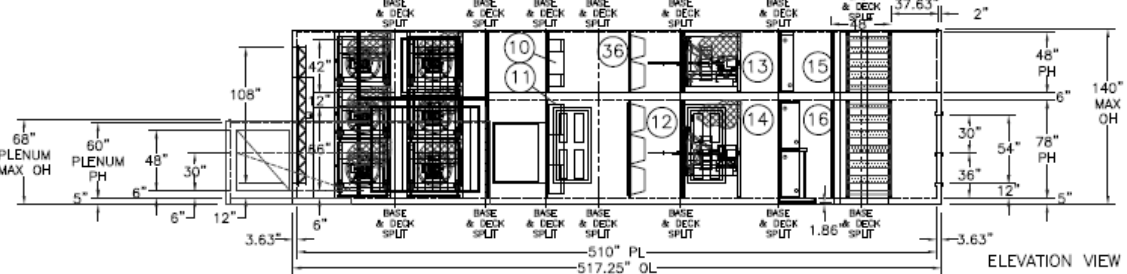
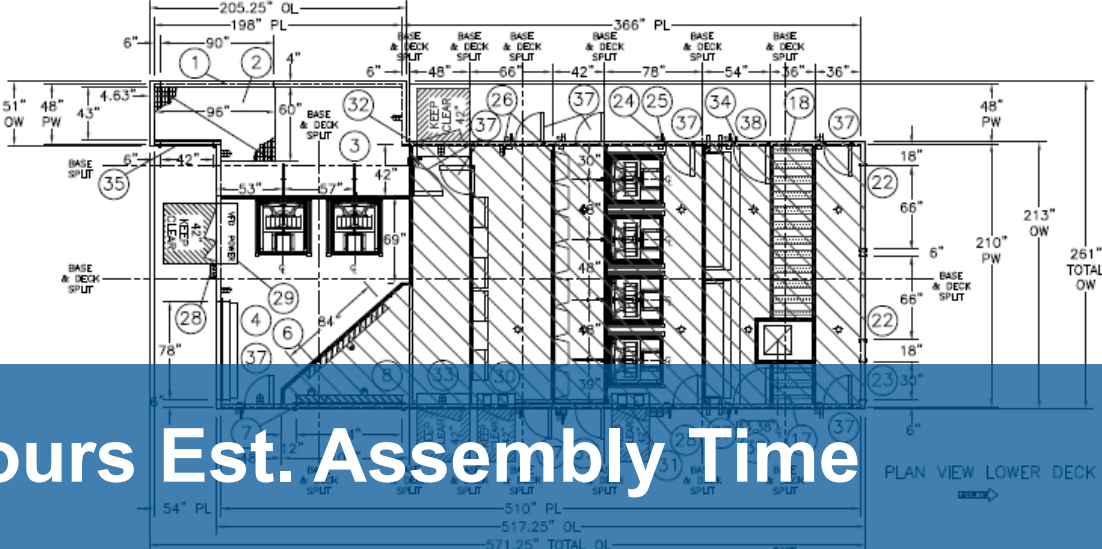
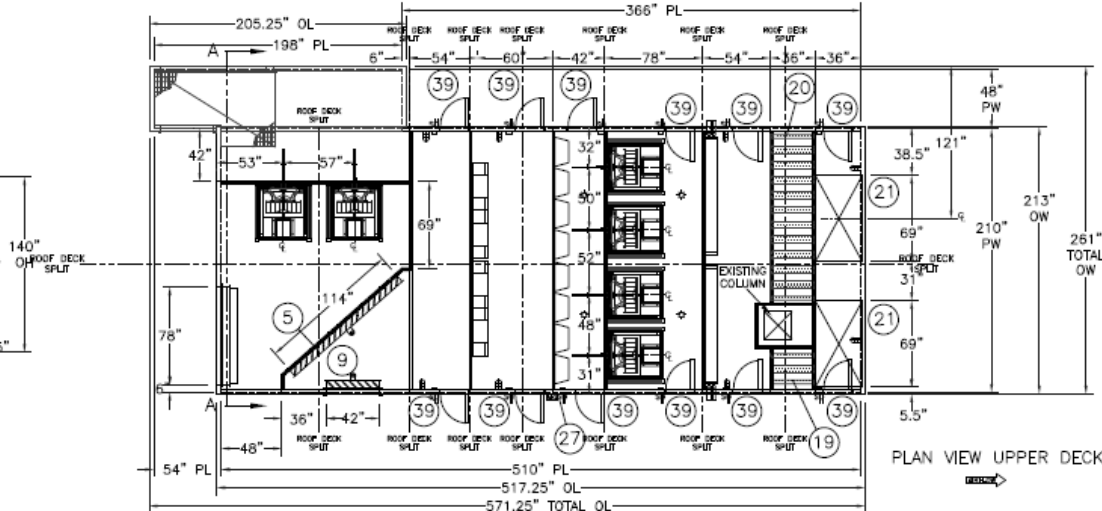
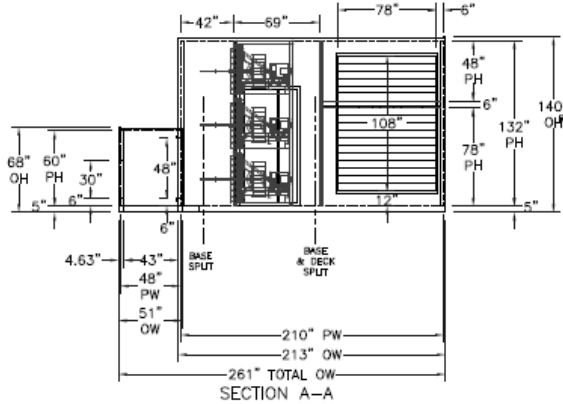
NOTE:
ACCESS UNIT WITH
MODULAR BASE



9 - CONTAINERS, 1 – TRUCK, 125 HOURS EST. ASSEMBLY TIME

COMPLEX AHU REPLACEMENT UNIT

151,000 TOTAL CFM



44 - Containers, 5 – Trucks, 650 Hours Est. Assembly Time

APPROXIMATE UNIT
ASSEMBLED WEIGHT 74,100 LBS.

INSTALLER TRAINING PROGRAM



Installer training for ACCESS™ replacement air handlers

- ✓ In our factory
- ✓ At your jobsite

Expert jobsite supervision of installers available

Phone / video support

Certification Program available for representative and contractor



CLIMA COOL



ClimateCraft

YES. We would love to follow up with you.

We know you couldn't make it to all of our presentations, it's a busy week! We hope you enjoyed your time. Let us know which content you'd like us to send you and we will reach out to you next week!



Let's Talk

Scan me

